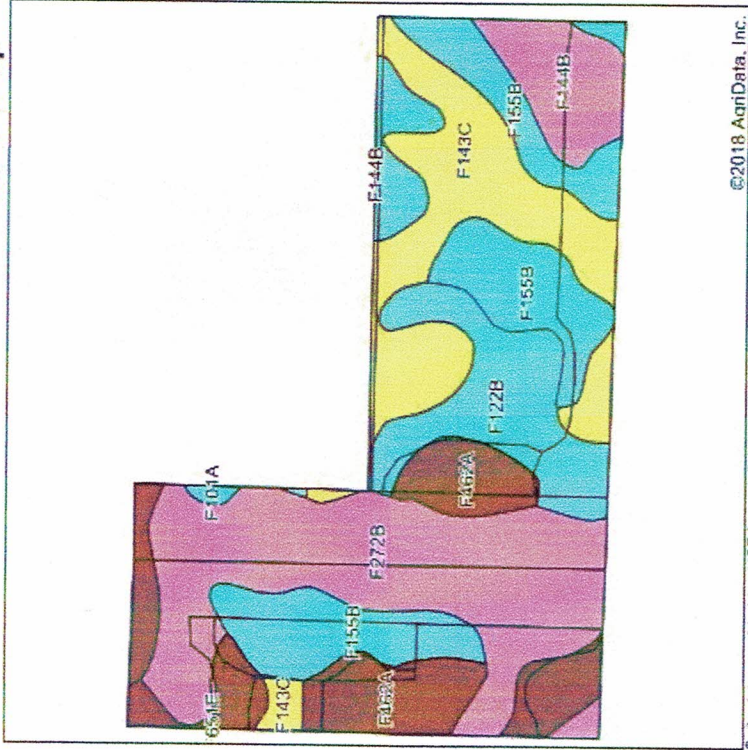
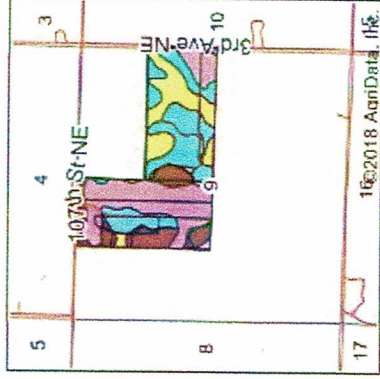


# Map Addendum

## Soils Map



Soils data provided by USDA and NRCS.



State: North Dakota  
 County: Bottineau  
 Location: 9-163N-77W  
 Township: Haram  
 Acres: 159.53  
 Date: 2/20/2018

Northern Appraisal & Realty, Inc.



Area Symbol: ND009, Soil Area Version: 24

Code	Soil Description	Acres	Percent of field	Non-Irr Class Legend	Non-Irr Class %C	Productivity Index	Barley	Oats	Sunflowers	Spring wheat	Winter wheat
F272B	Arvilla-Sioux complex, 2 to 6 percent slopes	43.61	27.3%		Ille	36					
F155B	Hamlet-Souris-Balaton loams, 1 to 5 percent slopes	34.27	21.5%		Ile	80					
F143C	Barnes-Buse-Langhei loams, 6 to 9 percent slopes	28.85	18.1%		Ive	55					
F462A	Exline silt loam, 0 to 2 percent slopes	21.56	13.5%		Vls	25					
F122B	Barnes-Cresbard loams, 3 to 6 percent slopes	17.34	10.9%		Ile	76					
F144B	Barnes-Buse loams, 3 to 6 percent slopes	9.43	5.9%		Ille	69					
F651E	Udarents loamy, abandoned gravel pits, 0 to 25 percent slopes	3.86	2.4%		Vile	14	1	1	11	1	1
F101A	Hamerly-Wyward loams, 0 to 3 percent slopes	0.61	0.4%		Ile	77					
<b>Weighted Average</b>						<b>53.3</b>	<b>*-</b>	<b>*-</b>	<b>0.3</b>	<b>*-</b>	<b>*-</b>