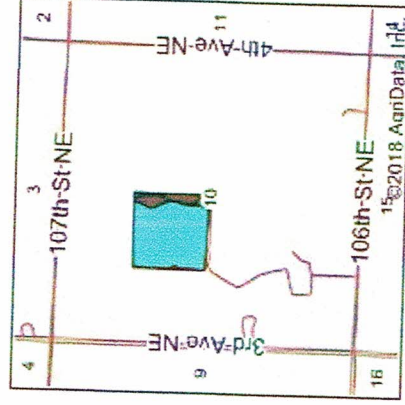
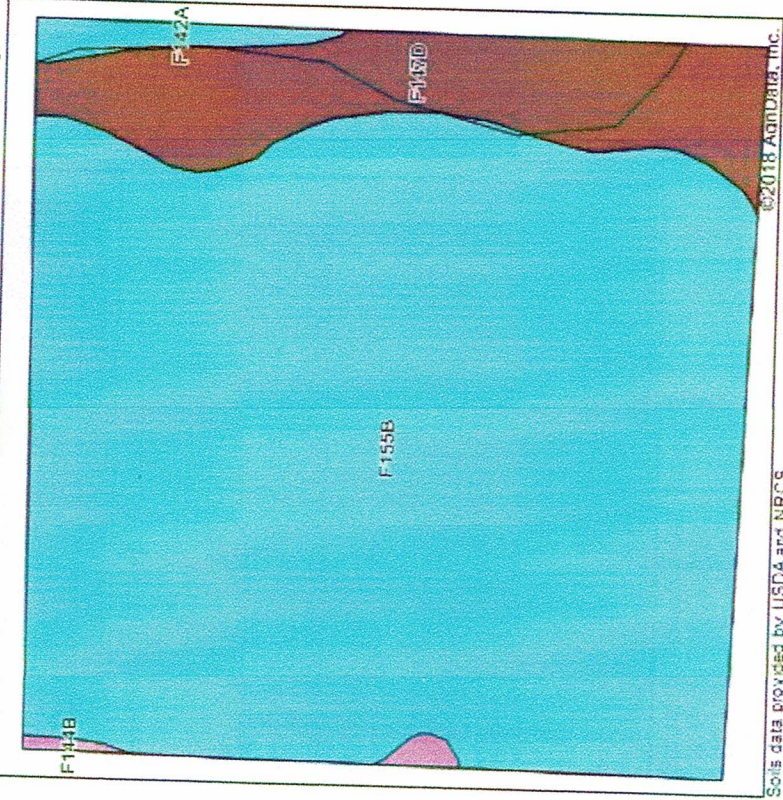


Map Addendum

Soils Map



State: North Dakota
 County: Bottineau
 Location: 10-163N-77W
 Township: Haram
 Acres: 38.1
 Date: 2/20/2018

Northern
 Appraisal
 & Realty, Inc.



Area Symbol: ND009, Soil Area Version: 24

Code	Soil Description	Acres	Percent of field	Non-Irr Class Legend	Non-Irr Class *C	Productivity Index
F155B	Hamlet-Souris-Balaton loams, 1 to 5 percent slopes	32.09	84.2%		lle	80
F147D	Buse-Barnes-Darnen loams, 6 to 15 percent slopes	5.23	13.7%		Vlle	46
F142A	Svea loam, 0 to 3 percent slopes	0.57	1.5%		llc	93
F144B	Barnes-Buse loams, 3 to 6 percent slopes	0.21	0.6%		llle	69
Weighted Average						75.5